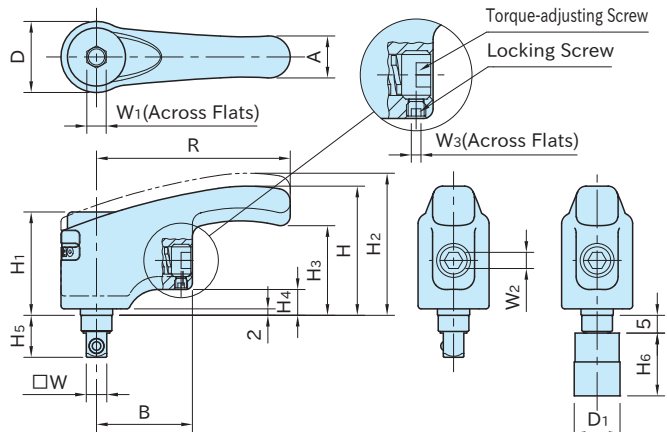


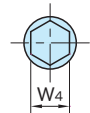
CP-TCW

ADJUSTABLE-TORQUEWRENCHES



Without Socket

With Socket



Socket Dimension

Type	Handle	Ratchet	Adapter	Socket
CP-TCW	SCM440 steel Quenched & tempered	SCM415 steel Carburized-hardened	SCM435 steel Quenched & tempered	—
CP-TCW-S	Painted Orange	Black oxide finished	Black oxide finished	Cr-V chrome-vanadium steel Chrome plated

Size	W	R	H	D	H ₁	H ₂	H ₃	H ₄	H ₅	A	B	W ₁	W ₂	W ₃
CP-TCW	6.3	60	40	22	32	44	27.5	8	13	13	30	6	5	2
		75	48	26	38	52.5	33	9		15	37	8		
CP-TCW-S	9.5	90	57	32	45	62.5	39.5	10.5	16.5	18	39	10	6	2.5

Size	Torque Range (N·m)	
CP-TCW	6	1~3.5
CP-TCW-S	8	2~5.4
	10	3~8

■ Without Socket

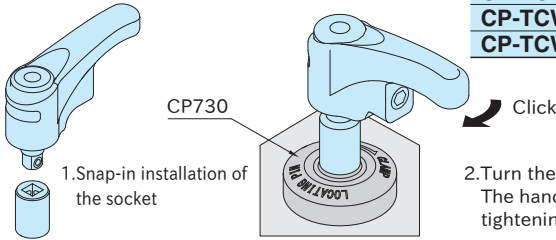
Part Number	Weight (g)
CP-TCW 6	166
CP-TCW 8	284
CP-TCW10	467

■ With Socket

Part Number	W ₄	D ₁	H ₆	Weight (g)
CP-TCW 6-S	10	13.8	25	183
CP-TCW 8-S	13	17.8		314
CP-TCW10-S	17	23.8	30	529

How To Use

Can be used as a tightening tool for **CP730** ONE-TOUCH FLEX LOCATOR CLAMPERS (Hexagon Head).

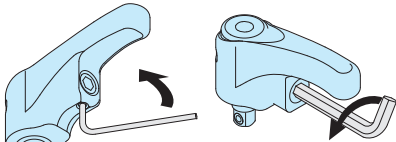


1. Snap-in installation of the socket

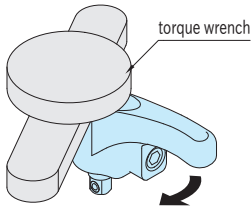
2. Turn the handle to clamp.
The handle clicks to indicate completed tightening at desired torque.

How To Set Torque

The preset torque is roughly set to its maximum tightening torque.

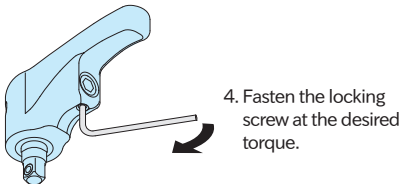


1. Loosen the locking screw.
2. Turn the hex key CCW to fine adjust the depth of torque-adjusting screw.



3. Measure the torque with a torque wrench.

- Connect a torque wrench on the Adjustable-Torque Wrench.
- Turn the handle in the tightening direction and fine adjust the depth of torque-adjusting screw to reach to the handle clicking position at desired torque.



4. Fasten the locking screw at the desired torque.

Reference

See **ATCL** ADJUSTABLE-TORQUE HANDLES page for further information.

Related Product

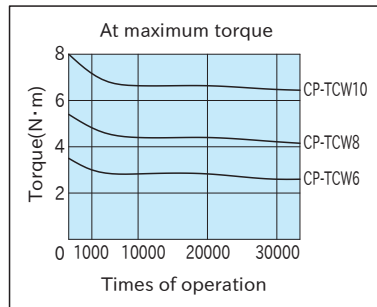
CP730 ONE-TOUCH FLEX LOCATOR CLAMPERS (Hexagon Head)

Part Number	Proper ONE-TOUCH FLEX LOCATOR CLAMPERS	
CP-TCW 6-S	CP730-0939LH	CP730-0939SH
CP-TCW 8-S	CP730-1246LH	CP730-1246SH
CP-TCW 10-S	CP730-1656LH	CP730-1656SH

Technical Information

- For initial several thousand operations, the tightening torque will decrease. (See the graph below)
Measure the torque regularly, and fine adjust the depth of torque-adjusting screw as needed.
- The tightening torque can vary. (Max. $\pm 15\%$)
Not recommended for precise torque management.

Torque Performance Graph



Note

- Do not overtighten or overloosen the torque-adjusting screw.

Reference Torque Adjusting Range

	Size	Rotation
Minimum torque position tightening end with roughly detectable touch	CP-TCW 6	3/4
	CP-TCW-S 8	1
	10	3/4

- To reach approx. the min torque, loosen the torque adjusting screw to the same end surface level of the body, then tighten it until you feel light touch of stop. (Ensure that the torque adjusting screw does not protrude from the body when loosening it.)
- To reach approx. the max torque, rotate the torque adjusting screw depending on the above table from the approx. min torque as instructed previously.