

CP735

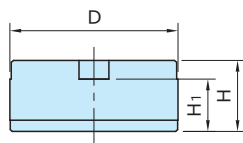
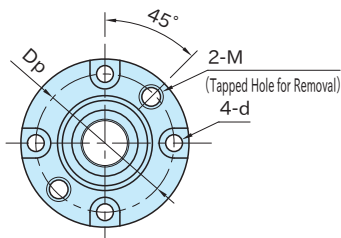
ONE-TOUCH FLEX LOCATOR BUSHINGS



(Tapered Type)



(Straight Type)



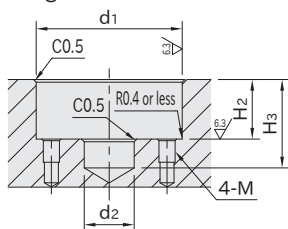
| Type | Body | Tapered Bushing |
|----------------|---|--|
| CP735-L | SCM440 steel Black oxide finished Quenched & tempered | SCM440 steel ISONITE treated (Nitrocarburized) |
| CP735-S | | — |

| Part Number | Type | D (g6) | H | d | H ₁ | D _p | M | Lifting Force (N)* | Weight (g) |
|--------------------|----------|--------|----|-----|----------------|----------------|--------|--------------------|------------|
| CP735-0939L | Tapered | 38 | 15 | 4.5 | 10 | 30 | M5×0.8 | 300 | 100 |
| CP735-0939S | Straight | | | | | | | — | 101 |
| CP735-1246L | Tapered | 45 | 19 | 4.5 | 14 | 37 | M6×1 | 450 | 179 |
| CP735-1246S | Straight | | | | | | | — | 184 |
| CP735-1656L | Tapered | 55 | 24 | 5.5 | 18 | 45 | M6×1 | 680 | 337 |
| CP735-1656S | Straight | | | | | | | — | 341 |

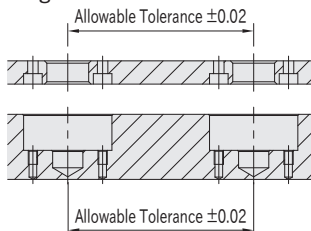
*) The lifting force is the power of the inner spring of the body to push up the movable tapered bushing.

How To Use

■ Mounting Hole Dimension



■ Spacing Tolerance



| Size | d ₁ (H7) | H ₂ (±0.05) | d ₂ | H ₃ | M |
|-------------------|---------------------|------------------------|----------------|----------------|--------|
| CP735-0939 | 38 | 15.5 | 13 | 23 | M4×0.7 |
| CP735-1246 | 45 | 19.5 | 16 | 28 | |
| CP735-1656 | 55 | 24.5 | 20 | 34 | M5×0.8 |

Related Product

- **CP730** ONE-TOUCH FLEX LOCATOR CLAMPERS (Hexagon Head)
- **CP731** ONE-TOUCH FLEX LOCATOR CLAMPERS (Cam Handle)
- **CP735-P** ONE-TOUCH FLEX LOCATOR (PROTECTING COVERS)

Reference

How To Use ONE-TOUCH FLEX LOCATORS (Hexagon Head / Cam Handle)