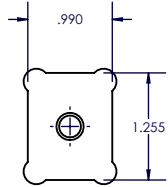


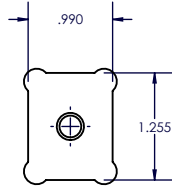
WISE FORCE WORKHOLDING CLAMPS

POCKET DEPTHS ∇ .050"

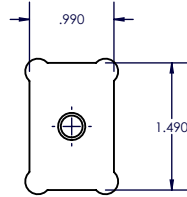
ALL CLAMPS REQUIRE 5/16-18 SHCS



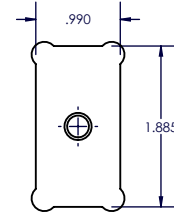
**VF1-S-CP
SMOOTH**



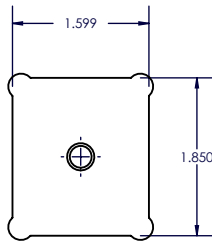
**VF1-SER-CP
SERRATED**



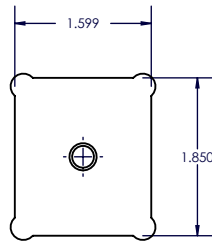
**VF1+3-CP
3MM MACHINABLE**



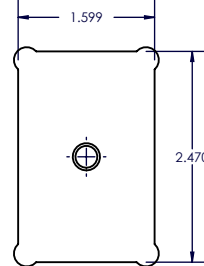
**VF1+8-CP
8MM MACHINABLE**



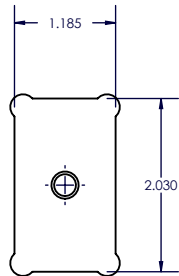
**VF15-S-CP
SMOOTH**



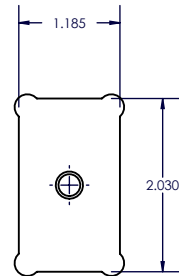
**VF15-SER-CP
SERRATED**



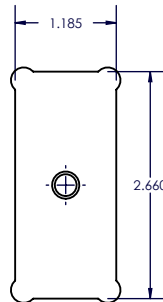
**VF15+8-CP
8MM MACHINABLE**



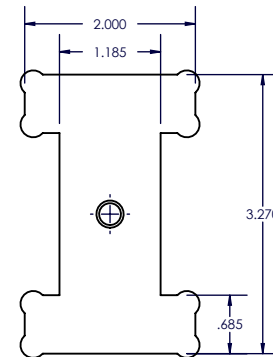
**VF2-S-CP
SMOOTH**



**VF2-SER-CP
SERRATED**



**VF2+8-CP
8MM MACHINABLE**



**VF2-TP-CP
TAPPED**



WISE FORCE
CLAMP POCKETS

SIZE A	DWG. NO.	REV. A
SCALE:1:2.25	WEIGHT:	SHEET 1 OF 1