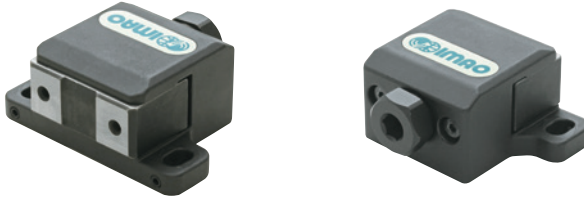


QLSCH-H

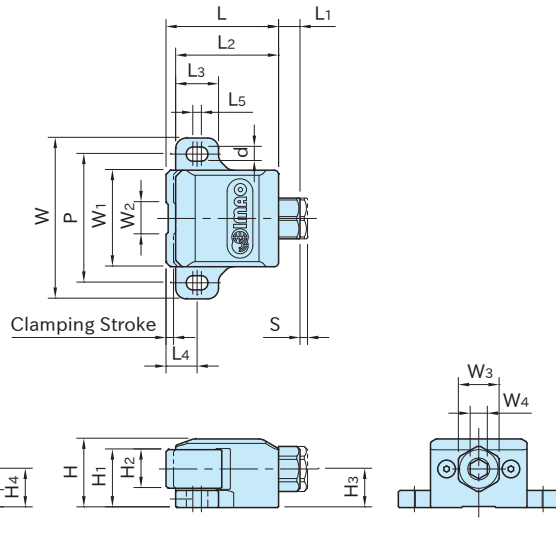
SIDE CLAMPS



★Key Point

Compact free vise that prevents lifting up of the part.

Body	Jaw	Shaft	Screw
S45C steel Black oxide finished	S45C steel Quenched & tempered Black oxide finished Precision ground	SCM440 steel Black oxide finished	SCM435 steel Quenched & tempered Black oxide finished



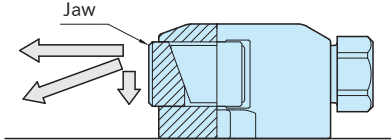
M1 Hex-Socket Setscrew

Part Number	Clamping Stroke	W ₁	W ₂	H ₁	H ₂	M	P ₁	H ₄	L ₄	W	L ₃	H ₅	d	L ₅
QLSCH32H	3	45	15	27	18	M4×0.7 Depth 6	30	18	14	75	20	8	6.6	3
QLSCH40H	4	60	20	33	22	M5×0.8 Depth 8	40	22	19	100	26	10	8.6	4

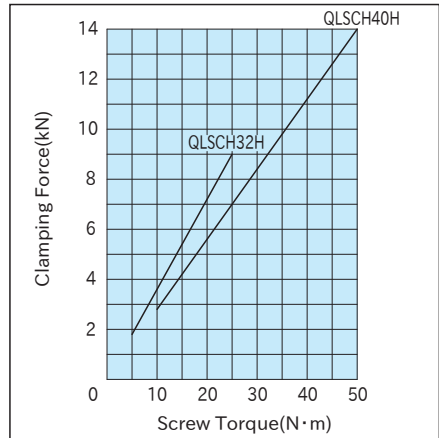
Part Number	P	H	L	L ₂	L ₁	H ₃	S	W ₃	W ₄	M ₁	Allowable Screw Torque(N·m)	Clamping Force(kN)	Weight (g)
QLSCH32H	60	32	52	48	10	18	3	19	8	M4×0.7-6L	25	9	560
QLSCH40H	80	40	69	63	13	22	4	24	10	M5×0.8-8L	50	14	1240

Feature

- A screw type clamping mechanism provides long clamping stroke and firm clamping.
- Precision-ground jaw is perfect for clamping the workpiece on its finished surface.
- In clamping, the jaw provides downward force to prevent part lift.

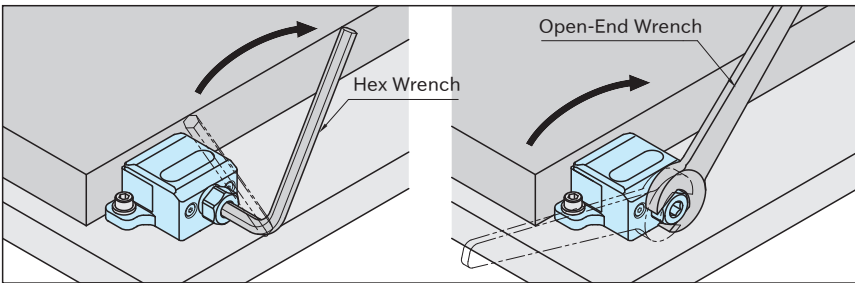


Performance Curve

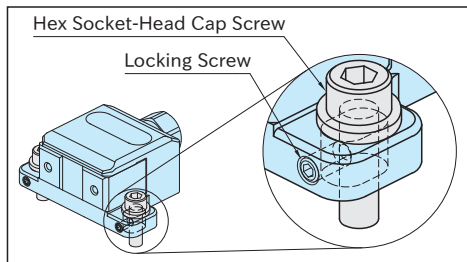


How To Use

- Can be clamped with both of hex wrench and open-end wrench.



- The locking screw must be screwed onto the hex socket-head cap screw to prevent the body sliding backwards when clamping.



QLSCH

CAM EDGE CLAMPS



One-Touch type is available.