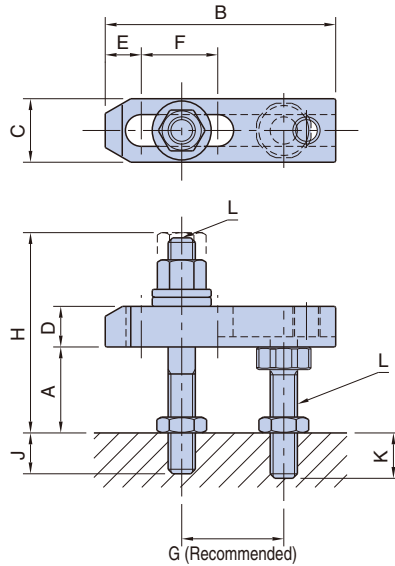


BJ153-A

TAPER-NOSE CLAMP ASSEMBLIES, A Type



[Stud]

Material : SCM435 steel
Heat Treat : Quenched and tempered
Finish : Black oxide

[Others]

Material : S45C steel
Heat Treat : Quenched and tempered
Finish : Black oxide

| Part Number | A | B | C | D | E | F | G | H | J | K | L | Clamping Force (N) At Max. - Min. End Projection | Allowable Screw Torque (N·m) | Weight (kg) |
|---------------|---------|-----|----|----|----|----|----|------|----|---------|----------|--|------------------------------------|----------------|
| | | | | | | | | Max. | | | | | | |
| BJ153-08040A1 | 15 - 25 | 40 | 19 | 12 | 10 | 6 | 20 | 51 | 12 | 22 - 12 | M 8x1.25 | 5,300 - 7,300 | 17 | 0.12 |
| BJ153-08040A2 | 20 - 35 | | | | | | | 66 | 14 | 27 - 12 | | | | 0.14 |
| BJ153-08050A1 | 15 - 25 | 50 | 12 | 12 | 14 | 20 | 27 | 51 | 12 | 22 - 12 | M 8x1.25 | 4,000 - 7,600 | 17 | 0.13 |
| BJ153-08050A2 | 20 - 35 | | | | | | | 66 | 14 | 27 - 12 | | | | 0.15 |
| BJ153-08063A1 | 15 - 25 | 63 | 12 | 12 | 14 | 20 | 27 | 51 | 12 | 22 - 12 | M 8x1.25 | 3,100 - 8,300 | 17 | 0.14 |
| BJ153-08063A2 | 20 - 35 | | | | | | | 66 | 14 | 27 - 12 | | | | 0.16 |
| BJ153-10050A1 | 20 - 30 | 50 | 12 | 12 | 8 | 25 | 30 | 62 | 18 | 20 - 10 | M 10x1.5 | 8,500 - 11,900 | 34 | 0.21 |
| BJ153-10050A2 | 25 - 45 | | | | | | | 80 | 20 | 30 - 10 | | | | 0.23 |
| BJ153-10063A1 | 20 - 30 | 63 | 12 | 12 | 18 | 25 | 30 | 62 | 18 | 20 - 10 | M 10x1.5 | 6,400 - 12,200 | 34 | 0.23 |
| BJ153-10063A2 | 25 - 45 | | | | | | | 80 | 20 | 30 - 10 | | | | 0.25 |
| BJ153-10080A1 | 20 - 30 | 80 | 25 | 15 | 32 | 30 | 40 | 63 | 18 | 20 - 10 | M 10x1.5 | 7,400 - 17,700 | 45 | 0.3 |
| BJ153-10080A2 | 25 - 45 | | | | | | | 80 | 20 | 30 - 10 | | | | 0.32 |
| BJ153-10100A1 | 20 - 30 | 100 | 16 | 15 | 40 | 40 | 55 | 63 | 18 | 20 - 10 | M 10x1.5 | 8,800 - 18,800 | 45 | 0.35 |
| BJ153-10100A2 | 25 - 45 | | | | | | | 80 | 20 | 30 - 10 | | | | 0.37 |
| BJ153-10125A1 | 20 - 30 | 125 | 16 | 15 | 40 | 40 | 55 | 63 | 18 | 20 - 10 | M 10x1.5 | 9,800 - 19,600 | 45 | 0.41 |
| BJ153-10125A2 | 25 - 45 | | | | | | | 80 | 20 | 30 - 10 | | | | 0.43 |

| Part Number | A | B | C | D | E | F | G | H | J | K | L | Clamping Force (N) At Max. - Min. End Projection | Allowable Screw Torque (N·m) | Weight (kg) | | | | |
|---------------|---------|-----|----|----|----|-----|----|---------|---------|---------|----------|--|------------------------------------|----------------|---------|---------|---------|------|
| | | | | | | | | Max. | | | | | | | | | | |
| BJ153-12063A1 | 20 - 40 | 63 | 32 | 16 | 14 | 14 | 30 | 80 | 20 | 33 - 13 | M12x1.75 | 13,700 - 21,600 | 71 | 0.38 | | | | |
| BJ153-12063A2 | 45 - 55 | 80 | | | | | | 25 | 101 | 24 | | | | 23 - 13 | 0.42 | | | |
| BJ153-12080A1 | 20 - 40 | | | | | | | | 20 | 80 | | | | 20 | 33 - 13 | 0.43 | | |
| BJ153-12080A2 | 45 - 55 | 101 | | | | | | 24 | | 23 - 13 | | | | 0.47 | | | | |
| BJ153-12100A1 | 20 - 40 | 100 | | 19 | 20 | 40 | 35 | 80 | 20 | 33 - 13 | M12x1.75 | 10,900 - 25,800 | 80 | 0.54 | | | | |
| BJ153-12100A2 | 40 - 55 | 125 | | | | | | 101 | 24 | 28 - 13 | | | | 0.58 | | | | |
| BJ153-12125A1 | 20 - 40 | | | | | | | 160 | 50 | 50 | | | | 80 | 20 | 33 - 13 | 0.63 | |
| BJ153-12125A2 | 40 - 55 | 101 | | | | | | | 24 | 28 - 13 | | | | 0.67 | | | | |
| BJ153-12160A1 | 20 - 40 | 160 | | | | | | 60 | 75 | 80 | | | | 20 | 33 - 13 | 0.76 | | |
| BJ153-12160A2 | 40 - 55 | | | | | | | | | 101 | | | | 24 | 28 - 13 | 0.8 | | |
| BJ153-16080A1 | 25 - 35 | 80 | 38 | 19 | 18 | 17 | 40 | 81 | 20 | 28 - 18 | M16x2 | 16,600 - 26,000 | 115 | 0.72 | | | | |
| BJ153-16080A2 | 35 - 50 | 100 | | | | | | 25 | 25 | 45 | | | | 50 | 96 | 30 | 33 - 18 | 0.77 |
| BJ153-16100A1 | 25 - 35 | | | | | | | | | | | | | | 125 | 65 | 65 | 87 |
| BJ153-16100A2 | 35 - 50 | 102 | | | | | | 24 | 33 - 18 | 0.99 | | | | | | | | |
| BJ153-16125A1 | 25 - 35 | 160 | | 65 | 65 | 87 | 20 | 28 - 18 | 1.07 | | | | | | | | | |
| BJ153-16125A2 | 35 - 50 | | | | | 102 | 24 | 33 - 18 | 1.12 | | | | | | | | | |
| BJ153-16160A1 | 25 - 35 | 160 | | 65 | 65 | 87 | 20 | 28 - 18 | 1.25 | | | | | | | | | |
| BJ153-16160A2 | 35 - 50 | | | | | 102 | 24 | 33 - 18 | 1.3 | | | | | | | | | |
| BJ153-20160A1 | 45 - 70 | 160 | | 50 | 25 | 32 | 60 | 60 | 130 | 36 | 45 - 20 | M20x2.5 | 16,500 - 35,600 | 183 | 2 | | | |
| BJ153-20200A1 | | 200 | | | | | 80 | 80 | | | | | 17,900 - 37,800 | | 2.3 | | | |