

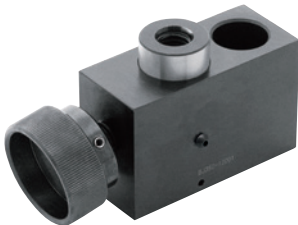
# BJ350

## WORK SUPPORTS



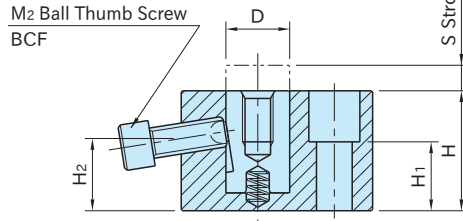
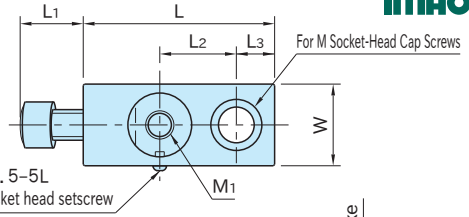
**BJ350**

(Ball-Thumb-Screw Style)



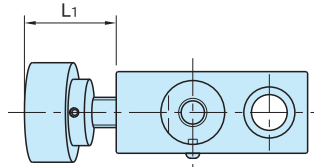
**BJ350-C**

(Knurled-Knob Style)

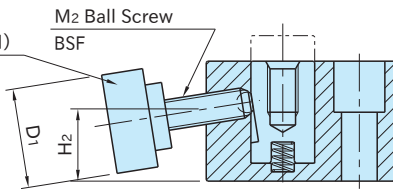


**BJ350**

(Ball-Thumb-Screw Style)



Knurled Knob  
(pinned and glued)  
BJ750-N



**BJ350-C**

(Knurled-Knob Style)

Body	Piston
S45C steel Black oxide finish	SK95 steel Quenched and tempered Black oxide finish

Size	H	S	M <sub>1</sub>	D	L	W	M	L <sub>2</sub>	L <sub>3</sub>	H <sub>1</sub>	H <sub>2</sub>
<b>BJ350</b> 06001	29	6	M 6X1 Depth 10	12	38	19	M 6	15	8	15	17.6
<b>BJ350</b> 08001	37	10	M 8X1.25 Depth 15	16	50	22	M 8	20	10	20	21.6
<b>BJ350-C</b> 10001	42		M10X1.5 Depth 15	19	65	25	M10	25	15		24.6
<b>BJ350-C</b> 12001	47		M12X1.75 Depth 20	25	75	32	M12	30		27	28.3

**BJ350** (Ball-Thumb-Screw Style)

Part Number	L <sub>1</sub>	M <sub>2</sub>	Screw Torque(N·m)	Support Capacity(kN)	Piston Spring Force(N)	Weight (g)
<b>BJ350-06001</b>	12	M 6×1 -16L	7.5	4	0~ 6	150
<b>BJ350-08001</b>	15	M 8×1.25-20L	14	6	0~ 7	285
<b>BJ350-10001</b>	18.5	M10×1.5 -25L	18	7.5	1~11	480
<b>BJ350-12001</b>	23	M12×1.75-30L	22	9		800

**BJ350-C** (Knurled-Knob Style)

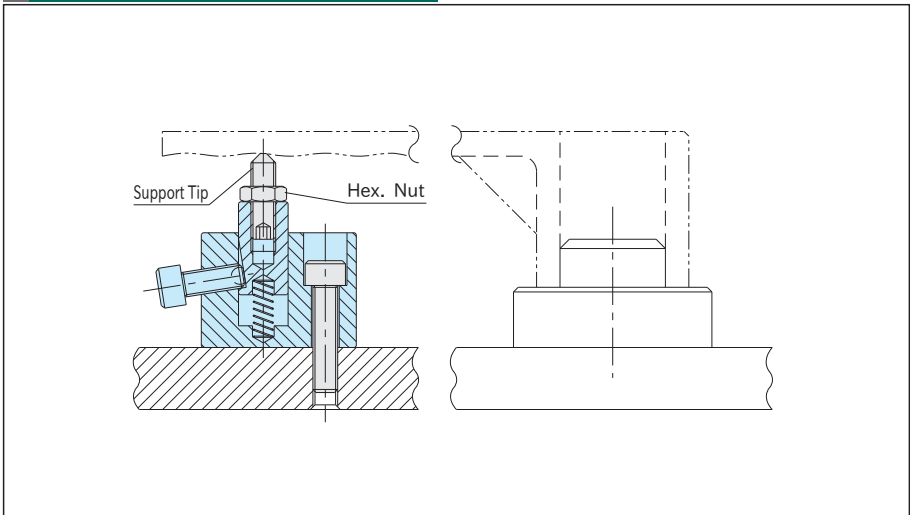
Part Number	L <sub>1</sub>	D <sub>1</sub>	M <sub>2</sub>	Screw Torque(N·m)	Support Capacity(kN)	Piston Spring Force(N)	Weight (g)
<b>BJ350-06001C</b>	20.7	24	M 6×1	1	0.6	0~ 6	180
<b>BJ350-08001C</b>	23.6	30	M 8×1.25	1.2	0.7	0~ 7	340
<b>BJ350-10001C</b>	26.2	36	M10×1.5	1.5		1~11	500
<b>BJ350-12001C</b>	31.3	40	M12×1.75	2	0.8		950

**Feature**

The positive locking mechanism allows the ball-thumb-screw style to offer high support capacities.

**Note**

When you attach a support tip to the tapped hole through the shaft, tighten the shaft and fix it to prevent damage.

**How To Use**

Ideal for preventing the workpiece from chattering and deflecting.