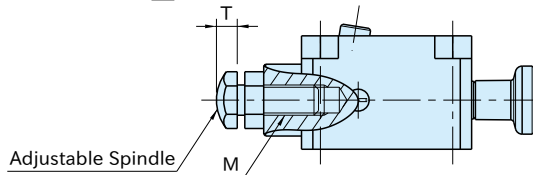
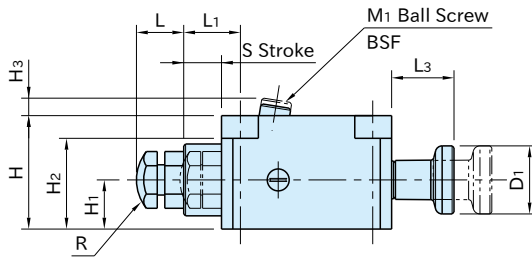
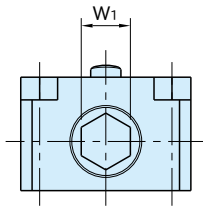
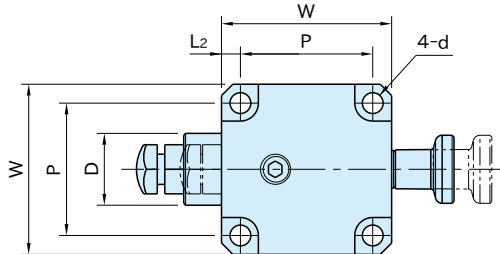


# BJ351-A

# HORIZONTAL WORK SUPPORTS



Body	Piston	Adjustable Spindle	Knob
S45C steel Black oxide finish	SK4 steel Quenched and tempered Black oxide finish	S45C steel Heat treated on edge Black oxide finish	Polyamide plastic Black

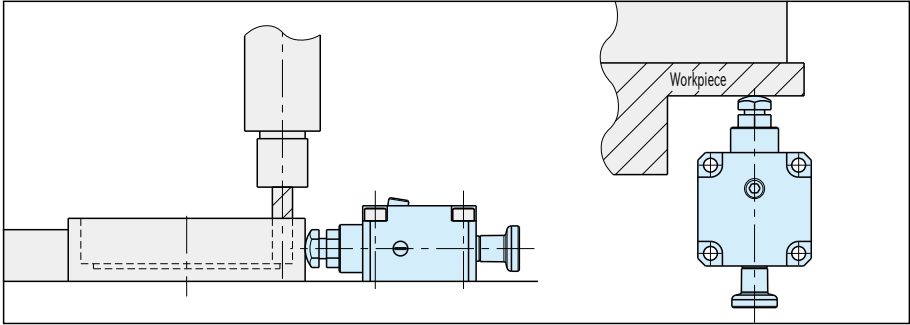


Internal structure of the piston part

Part Number	L	L <sub>1</sub>	S	L <sub>2</sub>	H <sub>1</sub>	D	W	H	d	H <sub>2</sub>	P	W <sub>1</sub>	T	R	M
<b>BJ351-06001A</b>	8~13	10	6	4	10	14	38	24	4.5	19	30	10	4	10	M 6X1 Depth 12
<b>BJ351-08001A</b>	11~18	15	10	5	13	19	45	30	5.5	24	35	13	5.5	12	M 8X1.25 Depth 16
<b>BJ351-12001A</b>	16~26	17.5		7.5	20	26	60	45	9	36	45	19	8	20	M12X1.75 Depth 24

Part Number	M <sub>1</sub>	H <sub>3</sub>	D <sub>1</sub>	L <sub>3</sub>	Screw Torque (N·m)	Support Capacity (kN)	Piston Spring Force (N)	Weight (g)
<b>BJ351-06001A</b>	M 6X1 -10L Across 2 Flats 3	3	16	14	3.5	1.5	0~ 6	260
<b>BJ351-08001A</b>	M 8X1.25-12L Across 2 Flats 4	5	18	16.5	8	2.5	1~ 6	450
<b>BJ351-12001A</b>	M12X1.75-20L Across 2 Flats 6	8	21	19	22	5	1~11	1160

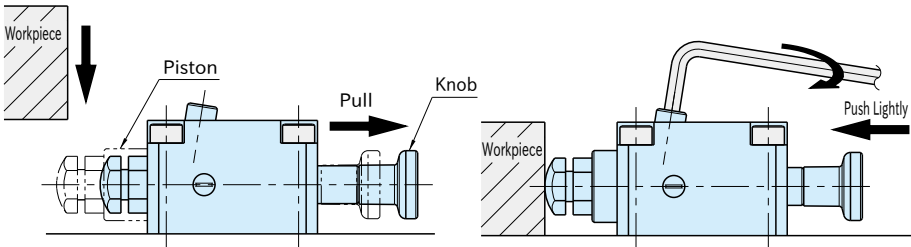
## How To Use



Ideal for preventing the thin workpiece from chattering and deflecting.

### ■ Operating Instruction

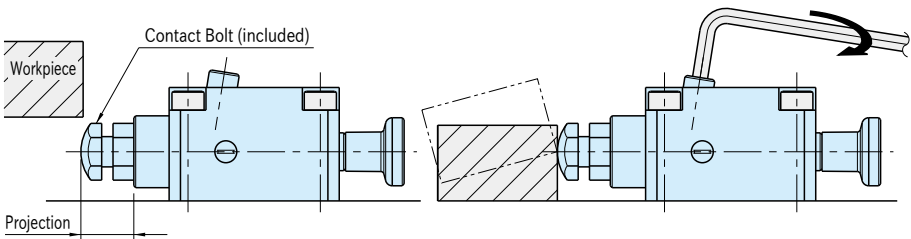
1. To set a workpiece with the piston retracted,



1. Set the piston retracted by pulling the knob.  
The internal plunger allows retaining the piston at the retracted position.

2. Load the workpiece and then push the knob lightly to let the adjustable spindle contact the workpiece. Tighten the ball thumb screw to lock the piston.

2. To set a workpiece without retracting the piston,



1. Adjust the projection of the adjustable spindle to let the bottom edge of workpiece contact the radius of the adjustable spindle when loading the workpiece.

2. Snap in the workpiece, and then tighten the ball thumb screw to lock the piston.

### 🔧 Note

When you attach a support tip to the tapped hole through the shaft, tighten the shaft and fix it to prevent damage.