

BJ731

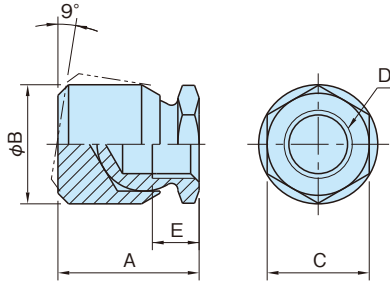
TOGGLE PADS



Steel



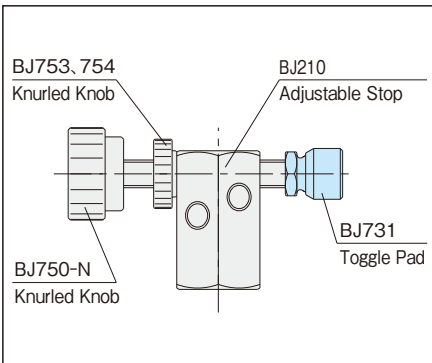
Stainless Steel



Type	Body
BJ731	Steel (S45C) Case hardened (on contact face) Black oxide finish
BJ731-SUS	Stainless Steel (SUS304)

Steel		Stainless Steel		A	B	D	E	Load Capacity (N)		Weight (g)
Part Number	C	Part Number	C					Static Load	Repeated Load	
BJ731-08017	13	BJ731-08017-SUS	14	17	15	M 8×1.25	6	8.000	5.300	18
BJ731-10022	17	BJ731-10022-SUS	17	22	20	M10×1.5	8	11.000	7.300	38
BJ731-12025	19	BJ731-12025-SUS	19	25	22	M12×1.75		15.900	10.600	60
BJ731-16033	24	-	-	33	28	M16×2	10	26.700	17.800	130
BJ731-20025	30	-	-	40	35	M20×2.5	14	37.500	25.000	210

Application Example



Use to clamp a workpiece from above and/or below.