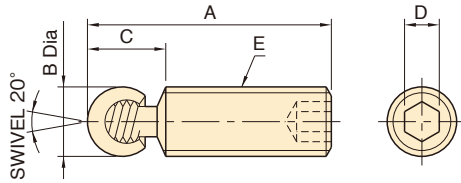


BJ736-C

SWIVEL SCREW CLAMPS, Type C



[Body]

Material : SCM435 steel

Heat Treat : Quenched and tempered

Finish : Black oxide finish

[Foot]

Material : SUM24L steel

Finish : Black oxide finish

Part Number	A	B	C	D	E	Allowable Screw Torque (N·m)	Clamping Force (N)	Weight (g)
BJ736-06015C	15	6	7	3	M 6x1	2.5	2,100	4
BJ736-06020C	20							5
BJ736-06025C	25							6
BJ736-06040C	40							10
BJ736-08020C	21	8	9	4	M 8x1.25	6.5	4,100	9
BJ736-08025C	26							11
BJ736-08040C	41							16
BJ736-08050C	51							21
BJ736-10020C	20	10	10	5	M10x1.5	13	6,500	14
BJ736-10025C	25							16
BJ736-10040C	40							26
BJ736-10050C	50							30
BJ736-10075C	75							46
BJ736-12040C	42	13	14	6	M12x1.75	20	8,300	38
BJ736-12050C	52							48
BJ736-12075C	77							68
BJ736-12100C	102							93
BJ736-16050C	51	16	17	8	M16x2	50	15,600	78
BJ736-16075C	76							113
BJ736-16100C	101							153
BJ736-16125C	126							193

Note:

Feet have lefthand threads to positively prevent backout when turning the screw counterclockwise.