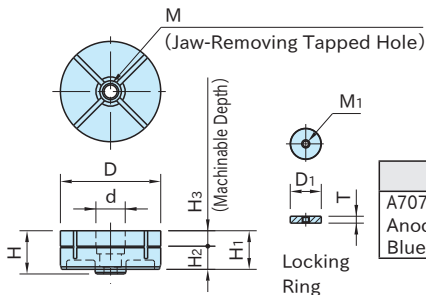
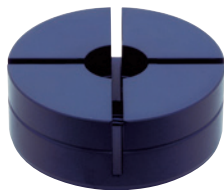


CP121

JAWS



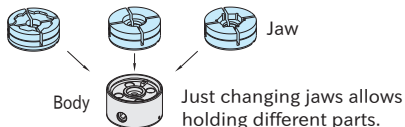
Jaw	Locking Ring
A7075 aluminum Anodized Blue	S45C steel Black oxide finish

Part Number	D	d	H ₁	H ₃	M	H	H ₂	M ₁	D ₁	T	Weight (g)	OD Holding Clamps	
CP121-06501	65	19	25	10	M10×1.5 (Prepared hole φ 8.5)	28	15	M4×0.7	18	4	170	CP120-06501	AMCH080-5W
CP121-09001	90	23	34	15	M12×1.75 (Prepared hole φ 10.2)	39	19	M5×0.8	22	6	470	CP120-09001	AMCH100-5W

Note

Jaw has lifecycle.

Feature



How to Remove Jaw

When it is hard to remove the jaw by hand, screw a bolt into the jaw-removing tapped hole to push it against the body, for easier removal.

