

GRL-L

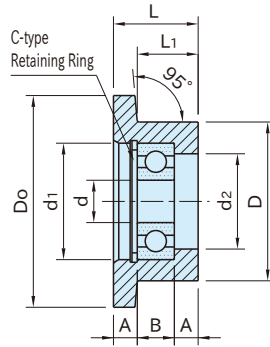
SINGLE-FLANGED GUIDE ROLLERS



GRL-S-L
(Steel)



GRL-J-L
(Plastic)



Type	Body	Bearing/Retaining Ring
GRL-S-L	S45C steel Electroless nickel plated	Steel
GRL-J-L	Polyacetal plastic Black	

Size	d	Do	D	d1	d2	L	L1	A	B	Bearing Type	Applicable Roller Pins				
											-	RLP0606	RLP06E	RLP06S	
GRL-S-L	30	6	30	22	17	13	12	8.5	3	6	606ZZ	-	RLP0606	RLP06E	RLP06S
	40	8	40	30	22	18	16	11.5	4.5	7	608ZZ	RLP0807F	RLP0807	RLP08E	RLP08S
GRL-J-L	50	10	50	36	26	22	19	14.5	5.5	8	6000ZZ	RLP1008F	RLP1008	RLP10E	RLP10S
	60	12	60	42	32	26	23	18	6.5	10	6201ZZ	RLP1210F	RLP1210	RLP12E	RLP12S
	70	15	70	46	35	29	28	22.5	8.5	11	6202ZZ	-	RLP1511	RLP15E	RLP15S

Steel		Plastic	
Part Number	Weight (g)	Part Number	Weight (g)
GRL30S-L	30	GRL30J-L	12
GRL40S-L	75	GRL40J-L	25
GRL50S-L	130	GRL50J-L	40
GRL60S-L	210	-	-
GRL70S-L	300	-	-

Features:

- Use as rollers for sliding doors or carriers.
- Medium-duty
- This product can accept a polished steel bar that is available commercially.

Related Product Page

Applicable Roller Pins

RLP-F | FLANGED ROLLER PINS

RLP | ROLLER PINS

RLP-S | ROLLER PINS

RLP-E | ECCENTRIC ROLLER PINS

Technical Information:

Load Rating of Bearings

Bearing Type	Basic Load Rating Cr (N)	Basic Static Load Rating Cor (N)
606ZZ	2260	840
608ZZ	3300	1360
6000ZZ	4550	1970
6201ZZ	6800	3050
6202ZZ	7650	3700