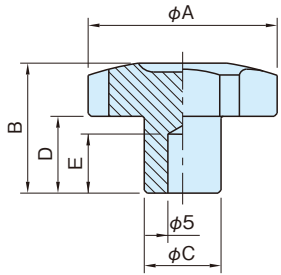


HK CAST IRON HAND KNOBS



Body
Gray cast iron (FC200)
Chrome plated finish

Part Number	A	B	C	D	E	Weight (g)
HK1	32	22	13	13	13	50
HK2	40	25	16	16	16	85
HK3	50	32	20	20	20	170
HK4	63	40	25	26	25	320
HK5	80	50	32	33	30	640