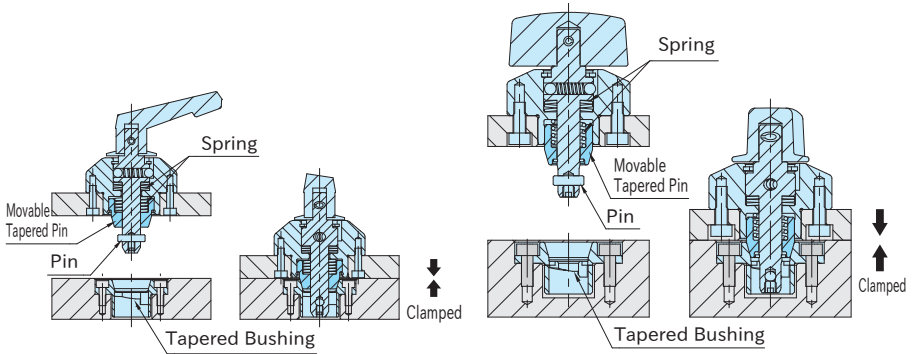


How To Use ONE-TOUCH FLEX LOCATORS (Handle / Knob)

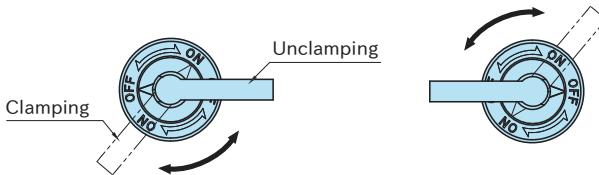
Feature



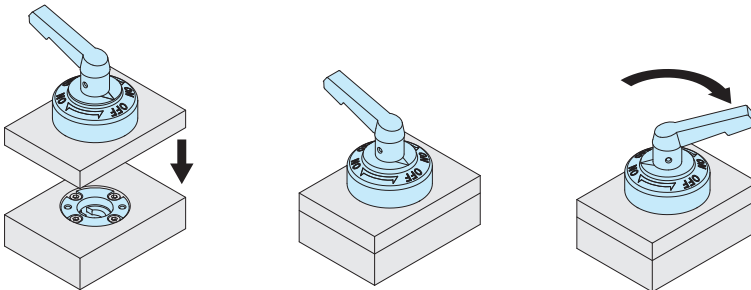
- The plates are located by fitting of the tapered pin and the tapered bushing.
- The pin contacts the cam surface inside the bushing, and it compresses the inner spring, then the plates are clamped.

Note: [CP722-0840R-06N](#) does not have locating function.

Two pair of clamping and unclamping positions of handle can be chosen for [CP722](#).



How To Operate

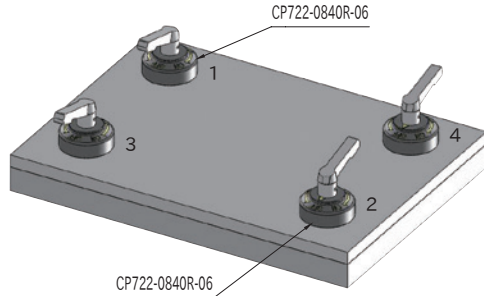


1. Ensure the handle is positioned at "OFF" mark.
2. Insert the clamping plate to the bushing.
3. Turn the handle to "ON" mark for clamping.

- *) Follow back these steps for unclamping.
 *) Same operation for Knob style.

Tightening Order

1. Ensure the handle is positioned at "OFF" mark and lift down the fixture plate.
 2. Turn the handle and clamp in order of 1→2→3→4.
- *) For unclamping, ensure the handle is positioned at "OFF" mark and disassemble the fixture plate.

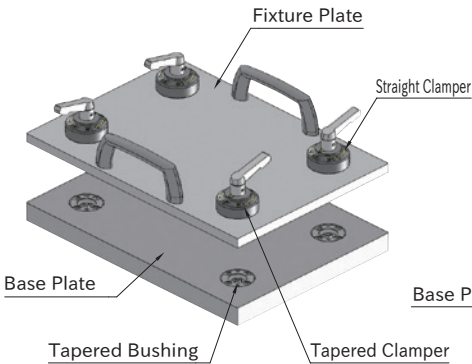


If the handles are not tightened in the correct order, the locating repeatability may exceed 10 μm .

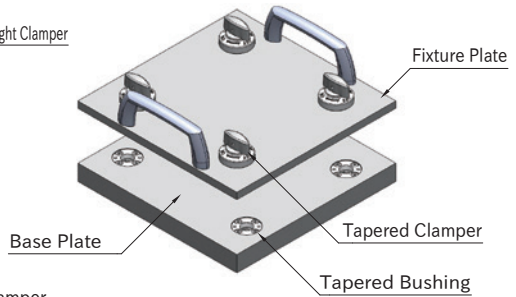
How To Use

Horizontal Assembly of Fixture Plate

Note: Ensure not to lift the fixture plate up and down with gripping the handle of the clampers.



CP722



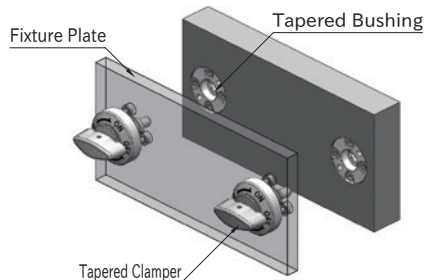
CP723

Vertical Assembly of Fixture Plate

Locating repeatability is 20 μm .

Size	Max. Loading Capacity(N)
CP722 CP727	0840R 400

Size	Max. Loading Capacity(N)
CP723	0632R 120
CP727	0840R 400



Note: The maximum load is the entire sum of the load of fixture plates, fixtures and workpieces.

Note: The maximum loading capacity shown is the value when two sets of Tapered Clamper and Tapered Bushing are used.