

# QLTL

## ADJUSTABLE-TORQUE HANDLES



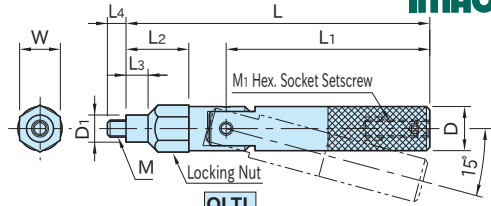
**QLTL**  
(Screw-In Handles)



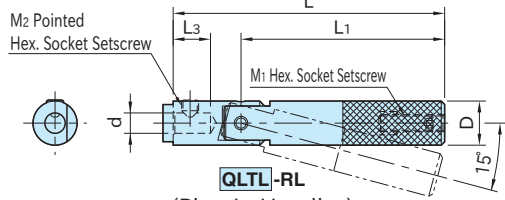
**QLTL-RL**  
(Plug-In Handles)



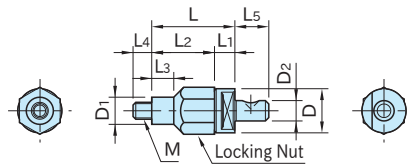
**QLTL-RA**  
(Plug-In-Handle Adaptors)



**QLTL**  
(Screw-In Handles)



**QLTL-RL**  
(Plug-In Handles)



**QLTL-RA**  
(Plug-In-Handle Adaptors)

Type	Stem	Locking Nut	Handle
<b>QLTL</b>	SCM435 steel Quenched & tempered Black oxide finished	S45C steel Black oxide finished	S45C steel Quenched & tempered Black oxide finished
<b>QLTL-RL</b>		—	
<b>QLTL-RA</b>		S45C steel Black oxide finished	—

### QLTL (Screw-In Handles)

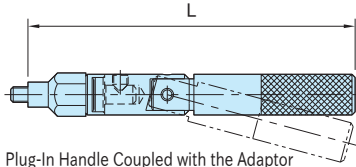
Part Number	L	L <sub>1</sub>	D	L <sub>2</sub>	L <sub>3</sub>	D <sub>1</sub>	W	M	L <sub>4</sub>	M <sub>1</sub>	Weight (g)
<b>QLTL120</b>	89.5	60	13	18.5	6.5	8	12	M5×0.8	5.5	M5×0.8-16L	90
<b>QLTL160</b>	119	84	15	23	8	10	14	M6×1	6.5	M6×1 -20L	140

### QLTL-RL (Plug-In Handles)

Part Number	L	L <sub>1</sub>	D	d	L <sub>3</sub>	M <sub>2</sub>	M <sub>1</sub>	Weight (g)
<b>QLTL120-RL</b>	80	60	13	6	11	M5×0.8-5L	M5×0.8-16L	70
<b>QLTL160-RL</b>	107	84	15	8	13	M6×1 -6L	M6×1 -20L	130

### QLTL-RA (Plug-In-Handle Adaptors)

Part Number	L	L <sub>1</sub>	D	L <sub>2</sub>	L <sub>3</sub>	D <sub>1</sub>	L <sub>5</sub>	D <sub>2</sub>	M	L <sub>4</sub>	Weight (g)
<b>QLTL120-RA</b>	24.5	6	13	18.5	6.5	8	10	6	M5×0.8	5.5	20
<b>QLTL160-RA</b>	30	7	15	23	8	10	12	8	M6×1	6.5	40



Plug-In Handle Coupled with the Adaptor

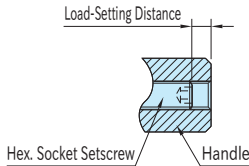
Type	L
<b>QLTL120</b>	104.5
<b>QLTL160</b>	137

## ■ Proper One-Touch Clamps

- SWING CLAMPS <QLSW>
- PULL CLAMPS <QLPD>
- PUSH CLAMPS <QLPU>

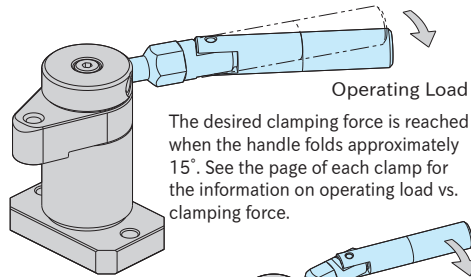
## How To Use

Turning the setscrew inside the handle allows adjusting the torque to set a desired clamping force.

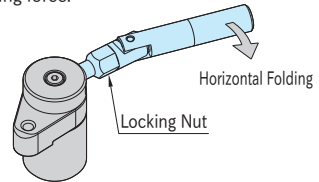


[Operating-Load Setting Range]  
 QLTL120/QLTL120-RL : 30N to 120N  
 QLTL160/QLTL160-RL : 50N to 160N

Note : Ensure that the operating load is not set below the lower limit to prevent the handle from returning to the unclamping position due to shock load generated during the transfer of machine pallets.

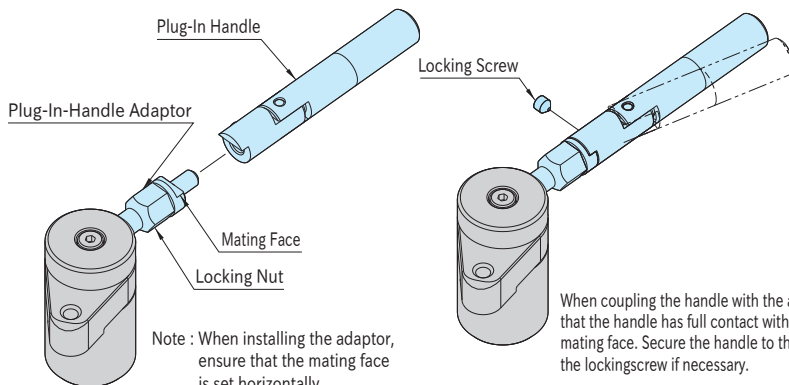


The desired clamping force is reached when the handle folds approximately 15°. See the page of each clamp for the information on operating load vs. clamping force.



Note : Ensure that the handle is set to fold horizontally.

## Plug-In Handle Installation



Note : When installing the adaptor, ensure that the mating face is set horizontally.

When coupling the handle with the adaptor, ensure that the handle has full contact with the adaptor's mating face. Secure the handle to the adaptor using the lockingscrew if necessary.