

# SC,OC

# CAST IRON CRANK HANDLES



**SC**

(Straight Crank, Round Hole)

Note : Handle must be ordered separately.

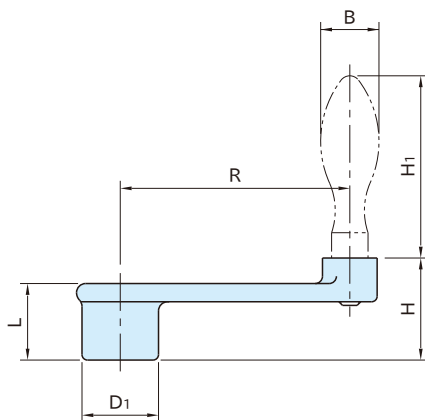


**OC-S**

(Offset Crank, Square Hole)

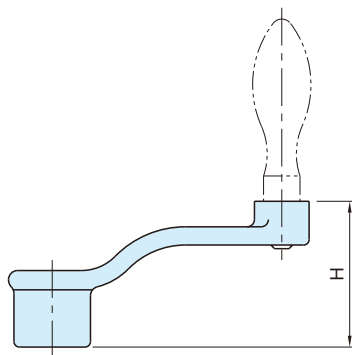
Note : Handle must be ordered separately.

Body
Ductile cast iron (FCD450)
Coated with anticorrosive oil



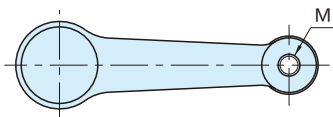
**SC SC-S**

(Straight Crank)



**OC OC-S**

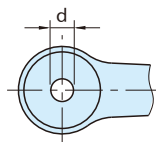
(Offset Crank)



**SC** 1~6

**OC** 4~6

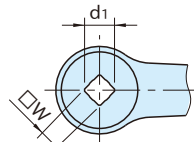
(Blank)



**SC** 7~10

**OC** 7~10

(Round Hole)



**SC-S** 1~10

**OC-S** 4~10

(Square Hole)

**SC SC-S** (Straight Crank)

Blank(OC4 - OC6),Round Hole(OC7 - OC10)					Square Hole						M	R	Weight (g)
Part Number	H	D <sub>1</sub>	L	d <sup>*</sup>	Part Number	H	D <sub>1</sub>	L	w <sup>+0.2</sup>	d <sub>1</sub>			
<b>SC 1</b>	23	17	17	-	<b>SC 1S</b>	22	15	16	8	10.8	M 6x1	32	95
<b>SC 2</b>	25	20	19		<b>SC 2S</b>	24	18	18	10	13.6		40	110
<b>SC 3</b>					<b>SC 3S</b>							50	115
<b>SC 4</b>					<b>SC 4S</b>							63	135
<b>SC 5</b>	31	26	24		<b>SC 5S</b>	30	24	23	12	16.5		M 8x1.25	80
<b>SC 6</b>	37	30	30	<b>SC 6S</b>	35	28	28	14	19.2	100	330		
<b>SC 7</b>	44	36	36	13	<b>SC 7S</b>	42	34	34	17	23	M10x1.5	125	550
<b>SC 8</b>	48	40	40		<b>SC 8S</b>	46	37	38	19	26		160	720
<b>SC 9</b>	52	44	44	17	<b>SC 9S</b>	50	40	42	22	29.5	M12x1.75	200	1,140
<b>SC10</b>	55	48	47		<b>SC10S</b>	54	45	46				250	1,460

Note \*) The diameter has a casting surface.

**OC OC-S** (Offset Crank)

Blank(OC4 - OC6),Round Hole(OC7 - OC10)					Square Hole						M	R	Weight (g)	
Part Number	H	D <sub>1</sub>	L	d <sup>**</sup>	Part Number	H	D <sub>1</sub>	L	w <sup>+0.2</sup>	d <sub>1</sub>				
<b>OC 4</b>	38	21	20	-	<b>OC 4S</b>	37	19	19	10	13.6	M 6x1	63	130	
<b>OC 5</b>	42	26	24		<b>OC 5S</b>	41	24	23	12	16.5		M 8x1.25	80	245
<b>OC 6</b>	56	30	30		<b>OC 6S</b>	54	28	28	14	19.2			100	330
<b>OC 7</b>	58	36	36	13	<b>OC 7S</b>	56	34	34	17	23	M10x1.5	125	550	
<b>OC 8</b>	71	40	40		<b>OC 8S</b>	69	37	38	19	26		160	710	
<b>OC 9</b>	84	44	44	17	<b>OC 9S</b>	82	40	42	22	29.5	M12x1.75	200	1,120	
<b>OC10</b>	91	48	47		<b>OC10S</b>	90	45	46				250	1,440	

Note \*\*) The diameter has a casting surface.

Handle Recommendations

Type / Size	Fixed Handle			Revolving Handle								
	Part Number	B	H <sub>1</sub>	Part Number	B	H <sub>1</sub>						
<b>1</b> <b>2</b> <b>3</b> <b>SC</b> <b>SC-S</b> <b>OC</b> <b>OC-S</b> <b>4</b> <b>5</b> <b>6</b> <b>7</b> <b>8</b> <b>9</b> <b>10</b>	SA16	16	50	RA16	16	53						
							SA20	20	64	RA20	20	67
	SA32	32	100	RA32	32	107						

 **Notes**

Crank handles with a square hole are machined on the outside diameter and the bottom of the hub.